

RECEIVED  
LARAMIE COUNTY  
CHEYENNE, WY.

'87 SEP 1 AM 9 18

CERTIFIED LAND CORNER RECORDATION.

DESCRIPTION OF CORNER EVIDENCE FOUND, AND ORIGINAL RECORD (if known)

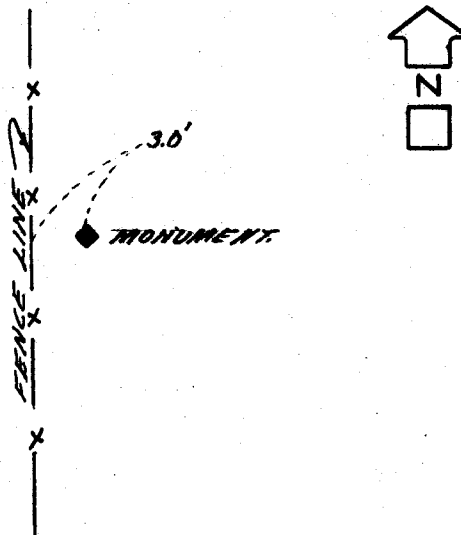
T. 14 N.  
R. 26 W.  
R. 68 W.

FOUND: 7"x7" BLACK STONE, PROJECTING 6" ABOVE GROUND, MARKED "V4"  
ON EAST FACE

DESCRIPTION OF MONUMENT AND ACCESSORIES ESTABLISHED  
TO PERPETUATE THE ORIGINAL LOCATION OF THIS CORNER:

SEE TIES BELOW

SKETCH, WITH COURSE AND DISTANCE TO ADJACENT CORNER IF DETERMINED IN THIS SURVEY.  
(May Sketch or Paste Reproduction on Reverse Side.)



I, JOHN A. STEIL certify that I have carefully performed or reviewed the work done on the diagrammed corner as reported on this recordation form, and approve the same.

*John A. Steil*  
Signature of Surveyor

43,2500  
Registration No.

STATE OF WYOMING,  
Office of Clerk and Recorder,  
County of Laramie

This "corner record" was filed for record on the 1 day of September, 1987, was noted on the cross-index plat and is assigned page No. \_\_\_\_\_, in book No. \_\_\_\_\_

*Janet C. Whitcomb*  
County Official

Cross Index No. <u>T-17</u>	T. <u>14 N</u>	R. <u>68 W</u>	Mer.
_____	T. _____	R. _____	Mer.
_____	T. _____	R. _____	Mer.
_____	T. _____	R. _____	Mer.
_____	T. _____	R. _____	Mer.
_____	T. _____	R. _____	Mer.
_____	T. _____	R. _____	Mer.